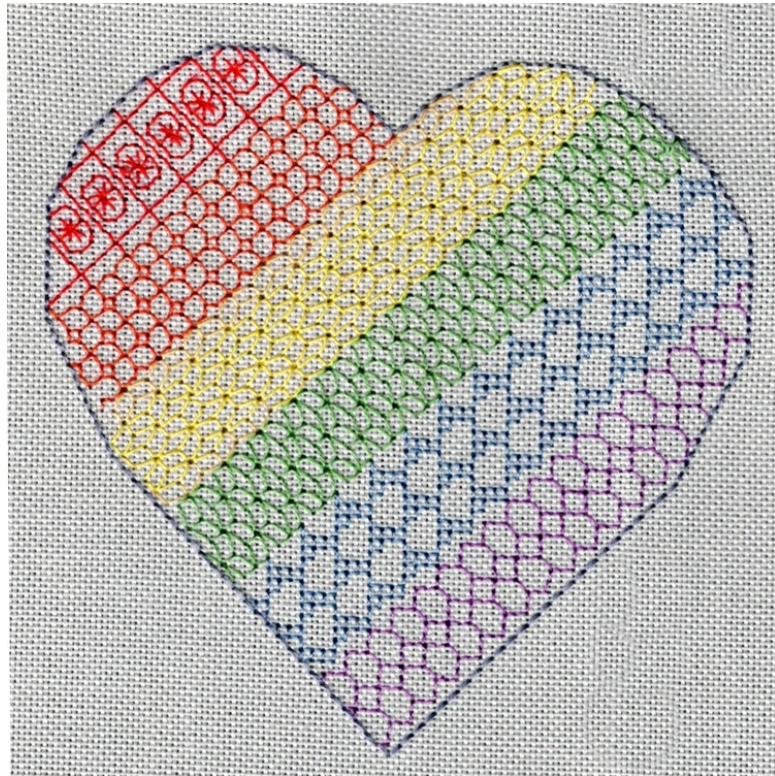


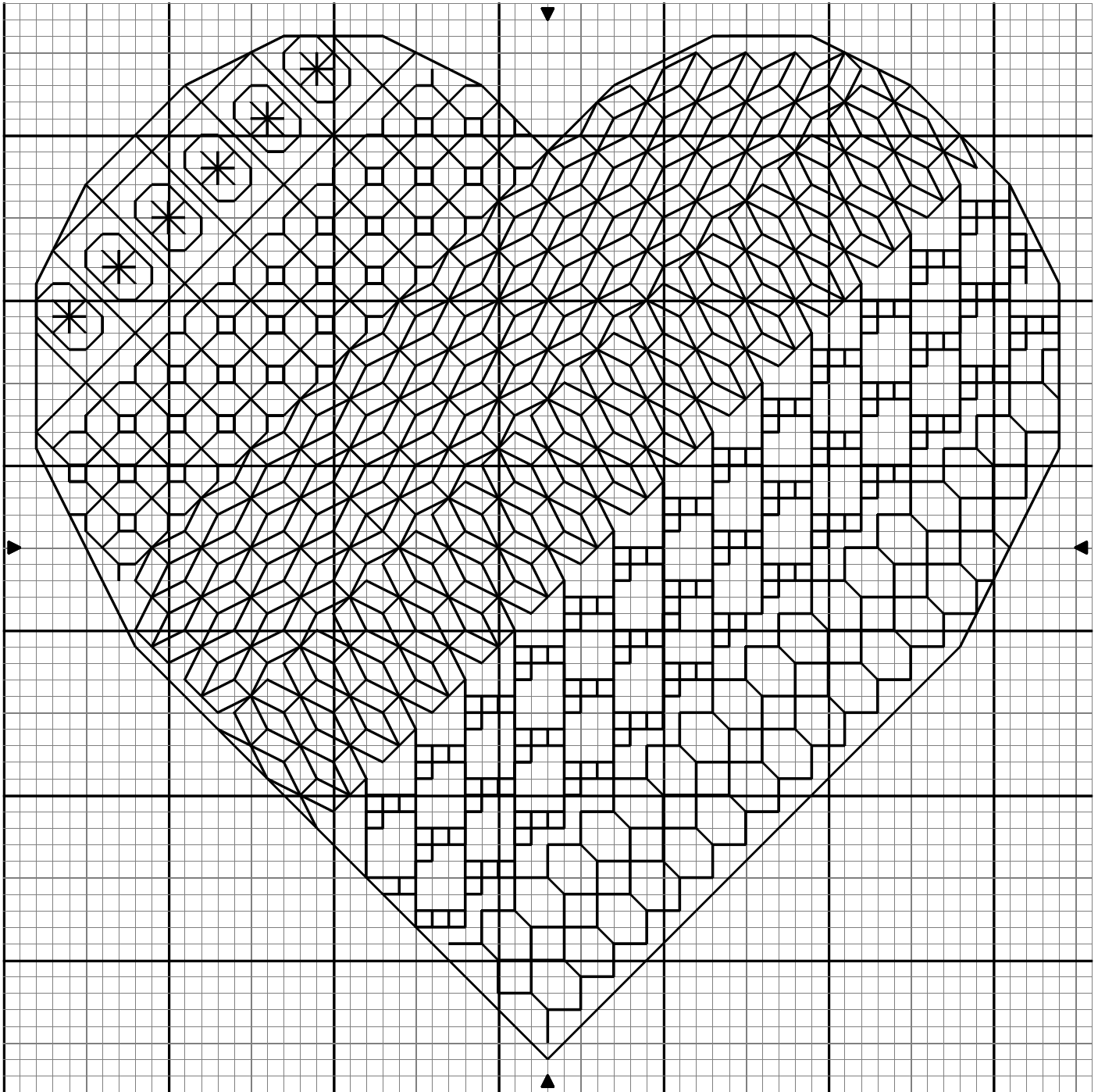
Arts and Designs

ArtsAndDesigns.com



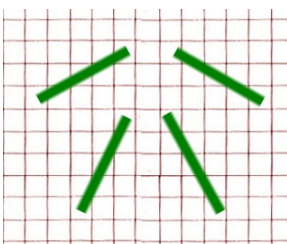
Rainbow Blackwork Heart by Anne Peden

Rainbow Blackwork Heart

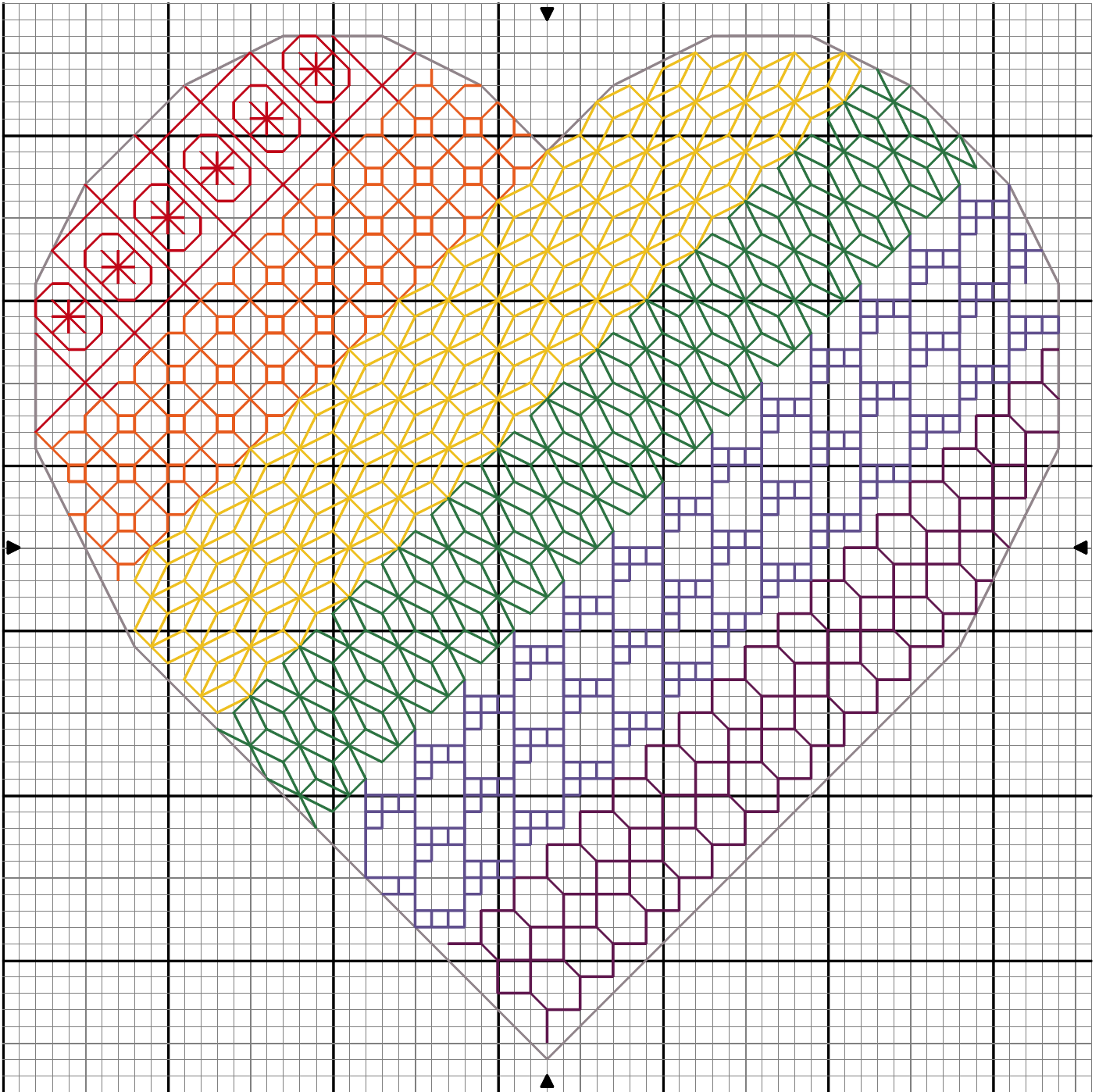


Working on 28 count fabric, the outline is stitched in backstitch using two strands of cotton.

The blackwork infill patterns are worked in a single strand of cotton using backstitch and long stitch. The yellow and green designs have stitches worked over two strands in one direction and over four in the other. These are worked in long stitch as diagram.



Rainbow Blackwork Heart



This design is more suitable for evenweave fabric. Choose the count and floss you prefer.

The model was worked on 28 count grey Jobelan using DMC - outline 414, red 666, orange 720, yellow 743, green 702, blue 931 and purple 552.

The stitch count is 62 by 62 and the finished size 11.5 by 11.5 centimetres.