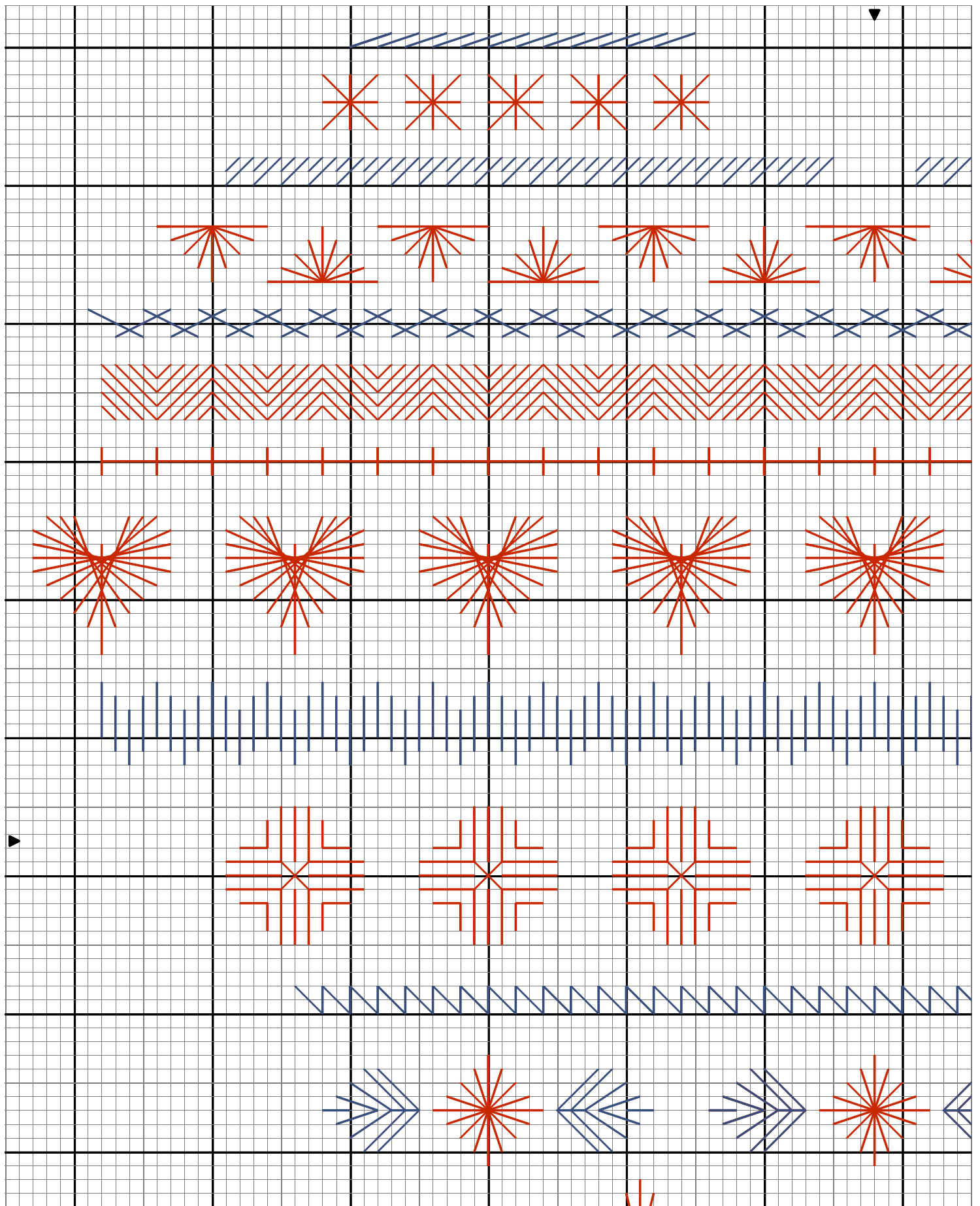


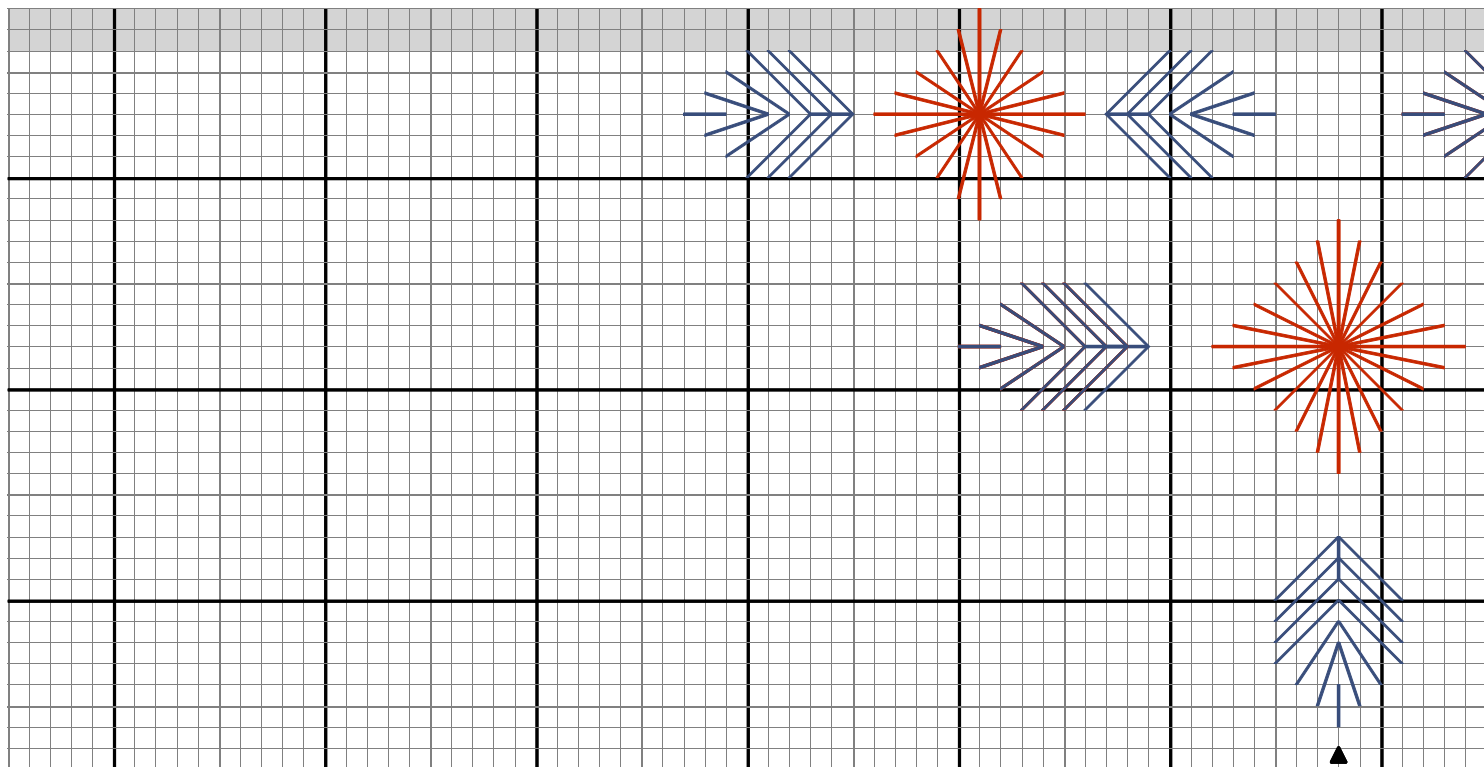
One square on the grid is is one fabric thread.

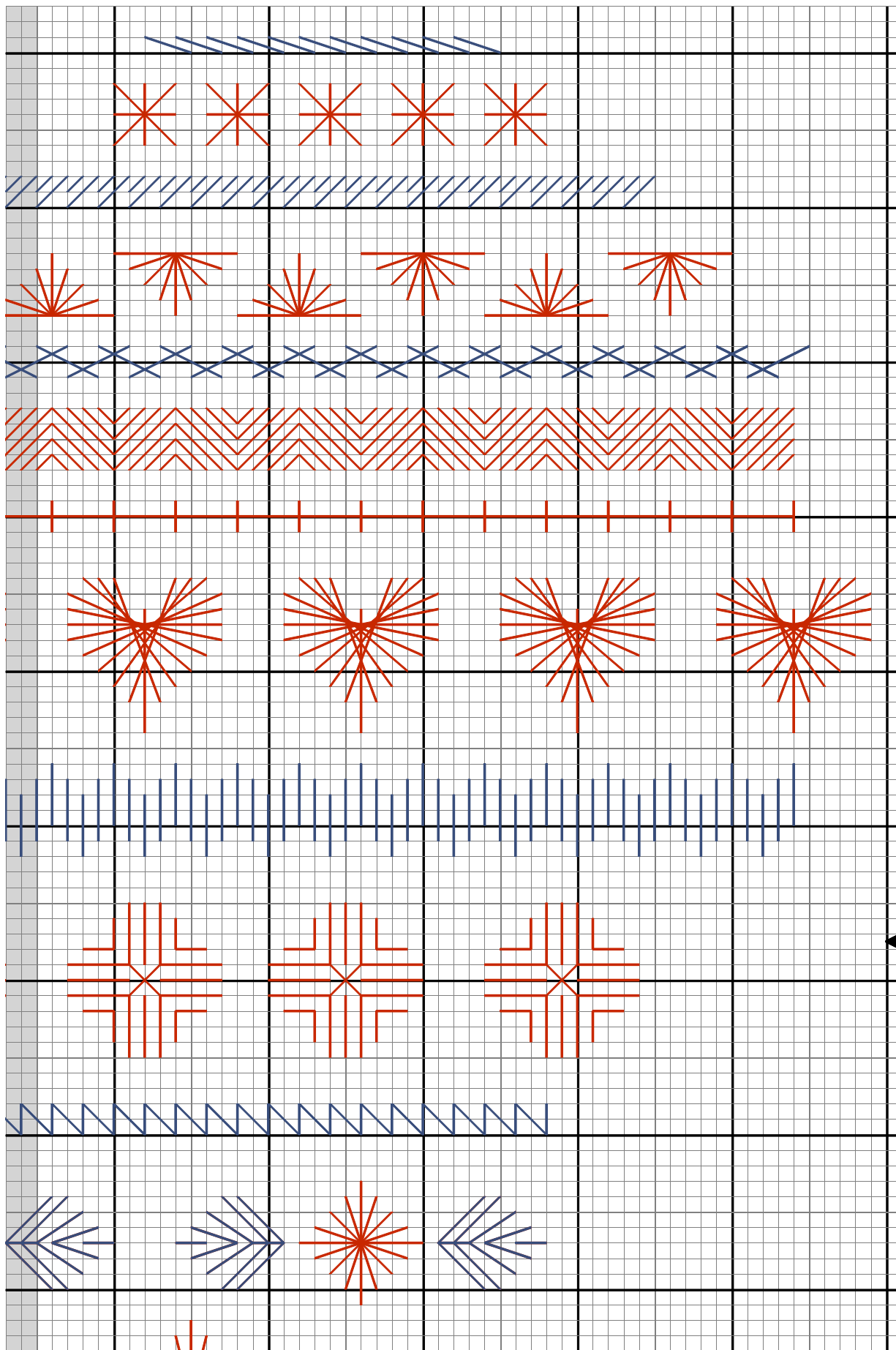
The sampler is stitched in stranded cottons, using two strands and no. 8 pearl cotton in the same shade. The stitches illustrated in red are in pearl cotton and in blue stranded cottons.

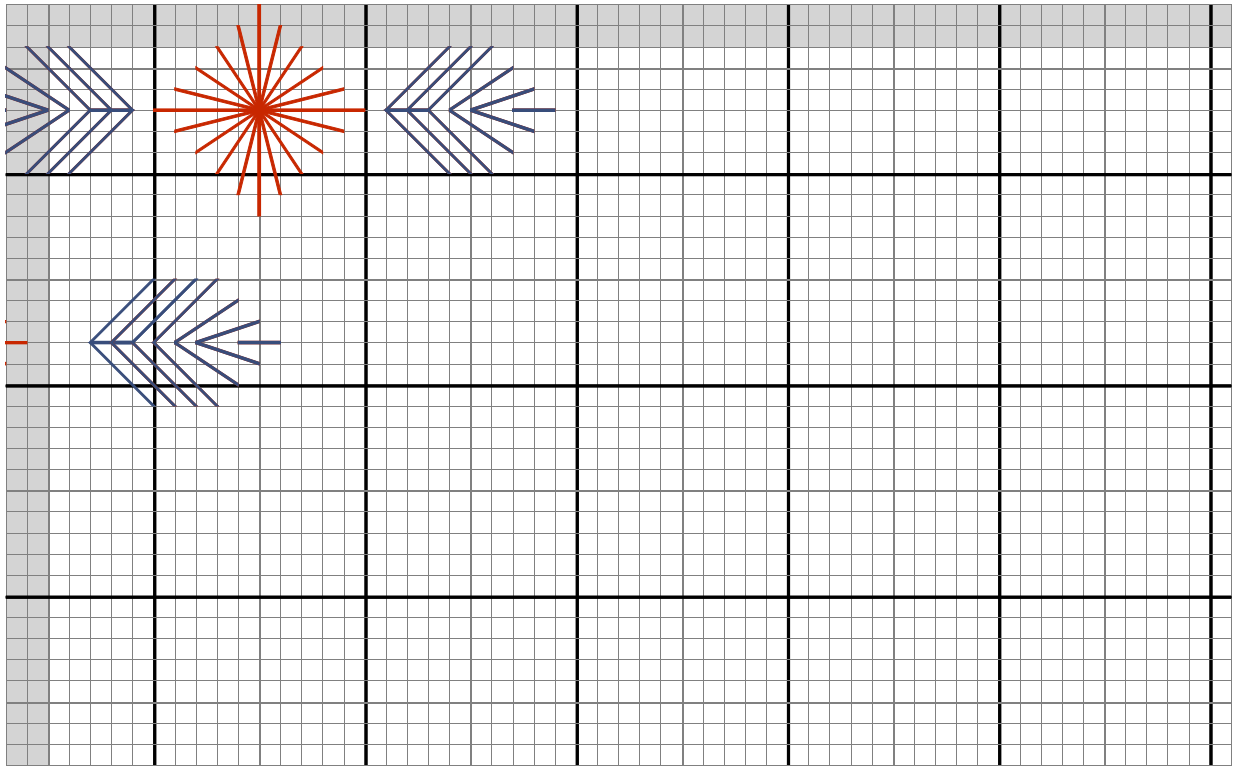
The stitch count is 122 by 117 and the model was stitched on 28 count evenweave fabric using Anchor 926.





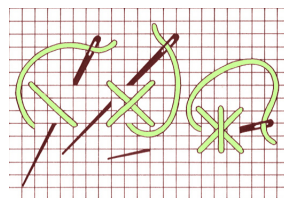






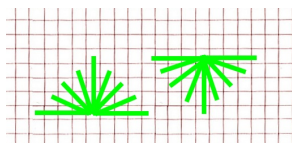
Row 1 Backstitch over three as illustrated

Row 2 Double Cross Stitch

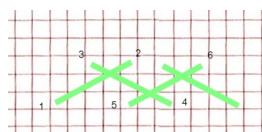


Row 3 Backstitch over one and two alternating as illustrated

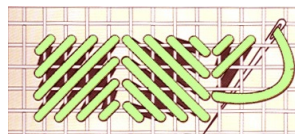
Row 4 Half Diamond Eyelet



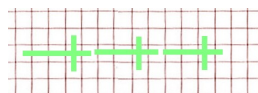
Row 5 Oblique Herringbone



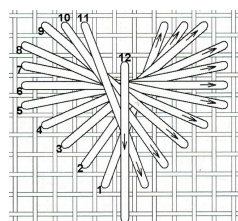
Row 6 Cushion Stitch over four



Row 7 Horizontal Fishbone Stitch

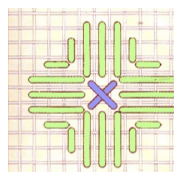


Row 8 Rhodes Hearts

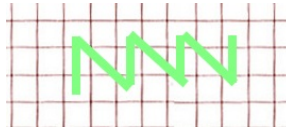


Row 9 Satin Stitch

Row 10 Flower Stitch



Row 11 Zig-Zag Holbein Stitch



Rows 12, 13, 14 Eyelet Stitches and Leaf Stitches

Note the change in size of eyelet stitches and number of repeats in leaf stitch..

